

SOLARFLEX

Cobalt Chromium Coronary Stent

SolarFlex Stent in Routine Clinical Practice (SOLSTICE) Registry

The SOLSTICE registry confirms the leading performance of this highly deliverable, ultra-thin strut cobalt chromium bare metal stent.

Primary Endpoint: Clinically driven TLR up to 6 months

Secondary Endpoints: MACE at 6 months
Definite or probable stent thrombosis at 6 months

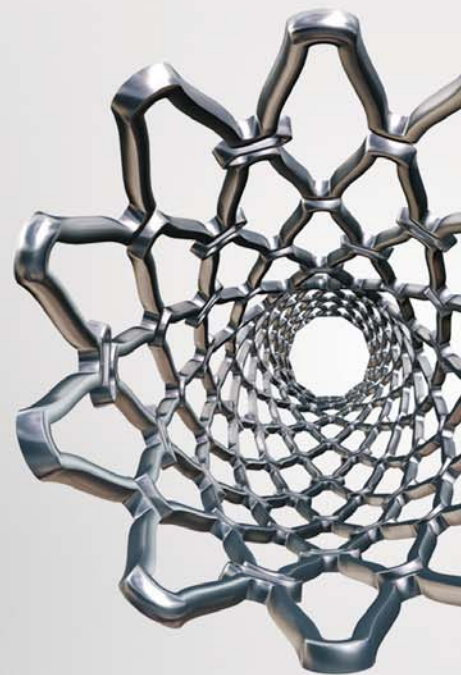
■ ■ ■
**All
Comers
Population**

- 240 patients enrolled in four sites in Belgium, Luxembourg and the Netherlands
- Diabetes 29%
- Acute MI: 30%
- Unstable Angina: 17%
- Previous PCI/CABG: 27%
- Ave age (Yrs): 66 ± 12.6
- Male: 74%
- 293 stents implanted in 292 lesions

■ ■ ■
**Primary,
Secondary
and
Performance
Endpoints**

- **Primary endpoint**
 - Clinically driven TLR up to 6 months: 3.3%
- **Secondary endpoints**
 - 6 month MACE (incl. in-hospital): 5.8%
 - Definite stent thrombosis: 1.7%
 - Probable stent thrombosis: 0.4%
- **Performance endpoints**
 - Device success: 99.7%
 - Procedural success: 97.5%

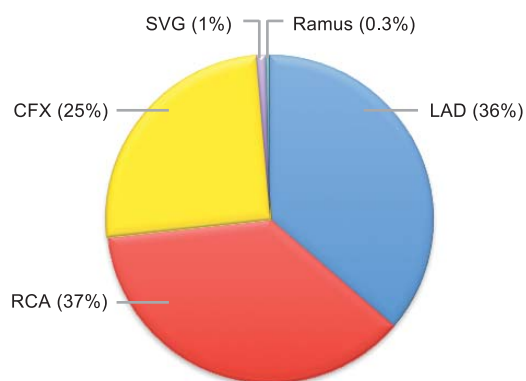
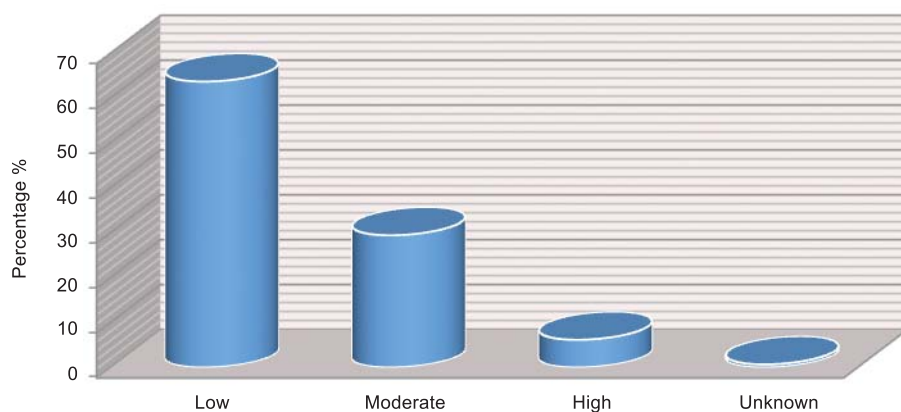
*Where cTLR excludes TLR up to 30 days



Bringing Quality to Life

Lesion Tortuosity

Vessel Treated



Lesion Type

Lesion Angulation

