



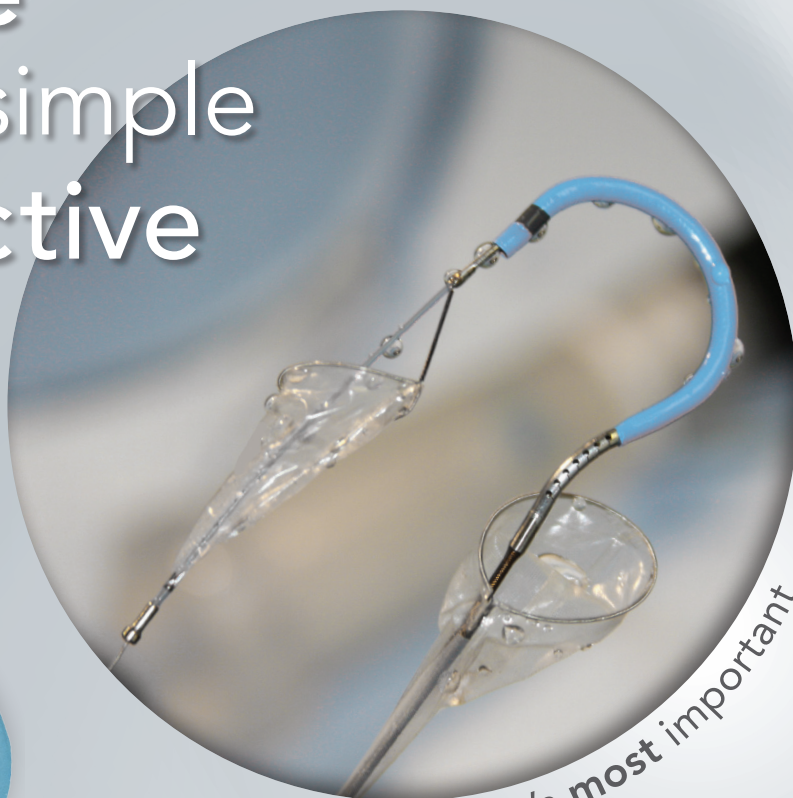
**claret**  
medical

leading the way to safer interventions

# The Montage™ Dual Filter System

*An elegant and simple low-profile system that safely and effectively provides embolic filtration of both carotid arteries during interventional procedures such as TAVI.*

safe  
simple  
effective



protect what's most important

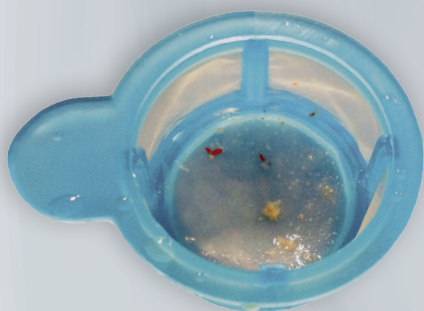


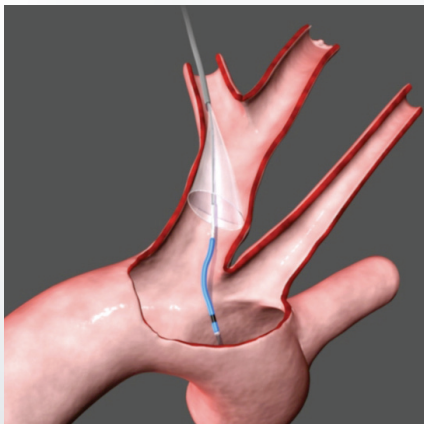
Image of Captured Debris.  
Courtesy of John Webb, MD, St. Paul's Hospital.

The Montage™ Dual Filter System is CE Mark approved and commercially available in select countries outside the United States, and is not available for sale in the United States

# The Montage™ Dual Filter System



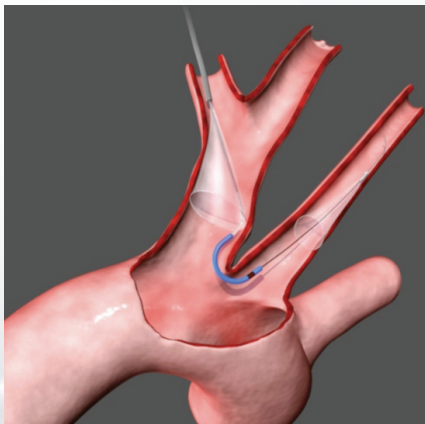
Model Number	Proximal Filter Size	Target Proximal Vessel Size	Distal Filter Size	Target Distal Vessel Size
CM-16-10-C	16 mm	9-15 mm	10 mm	8-10 mm



Step 1  
Proximal Filter



Step 2  
Curve



Step 3  
Distal Filter

The Montage™ Dual Filter System is indicated for use as an embolic protection device to capture and remove embolic material (thrombus/debris) that may enter the cerebral vascular system during endovascular procedures.

Claret Medical, Inc. develops medical devices such as cerebral vascular protection devices for Transcatheter Aortic Valve Implant (TAVI) procedures.

PL-10638, Rev. A, 11/28/12

Claret Medical, Inc.  
3633 Westwind Blvd.  
Santa Rosa, CA 95403  
USA



claretmedical.com



Euromed Medizinisch Technische Produkt  
Nobilegasse 23-25  
A-1150 Vienna, Austria

+43 1 979 38 50 tel  
+43 1 979 38 50 20 fax

info@claretmedical.com